



WIPPERMANN



## Special chains

Roller chains with attachments for comprehensive transport and handling applications



**Accumulator chains with AFS clips**  
Application: Automotive and assembly technology



**Roller chain with extended pins on one side**  
Application: Materials handling



**Roller chain nickel-plated with plastic rollers**  
Application: Electrical industry



**Triplex power and accumulator chain nickel-plated**  
Application: Materials handling,  
Conveyance and accumulating of bulk goods



**Hoisting chain as a substitute for rack and pinion drives**  
Application: Car parking systems



**Special chain as combination of leaf chain (support) and roller chain (drive)**  
Application: Materials handling



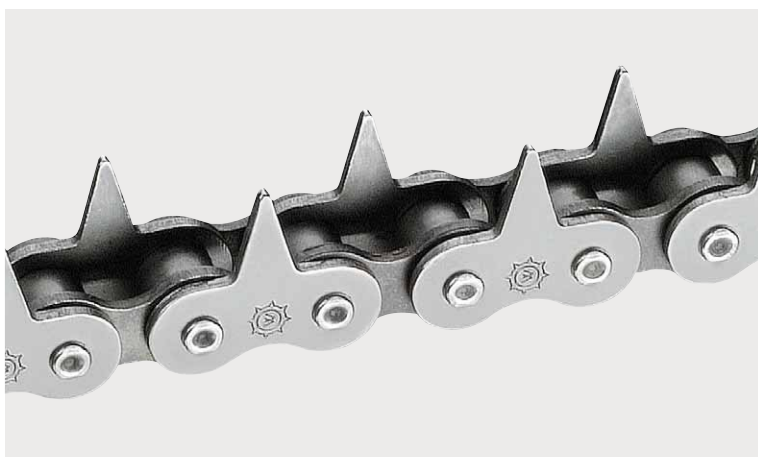
**Roller chain with special outer plates to house cylindrical parts**

Application: Materials handling



**Roller chain with extended pins on one side and double cut-ins in special dimensions**

Application: Materials handling



**Roller chain with alternately mounted inner and outer plates as attachments**

Application: Materials handling



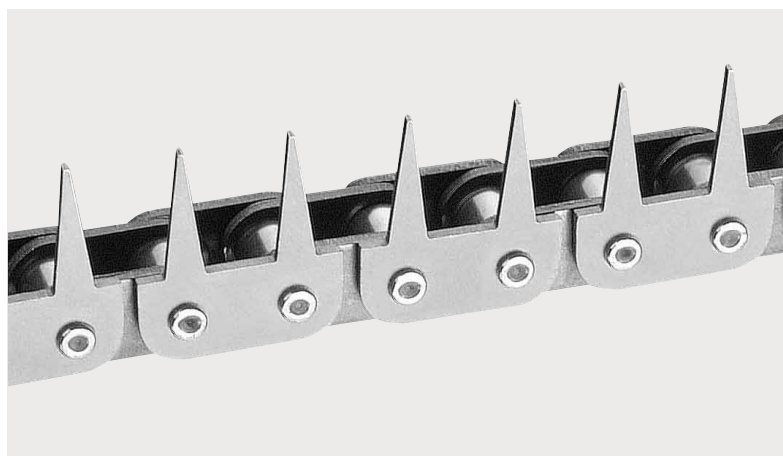
**Roller chain with laser-cut outer plates**

Application: Paper industry



**Pusher dog chains with POM clips for the gentle transport of sensitive goods**

Application: Packaging industry



**Roller chain with laser-cut outer plates**

Application: Packaging industry



Roller chain with laser-cut, slightly grinded outer plates  
Application: Timber industry



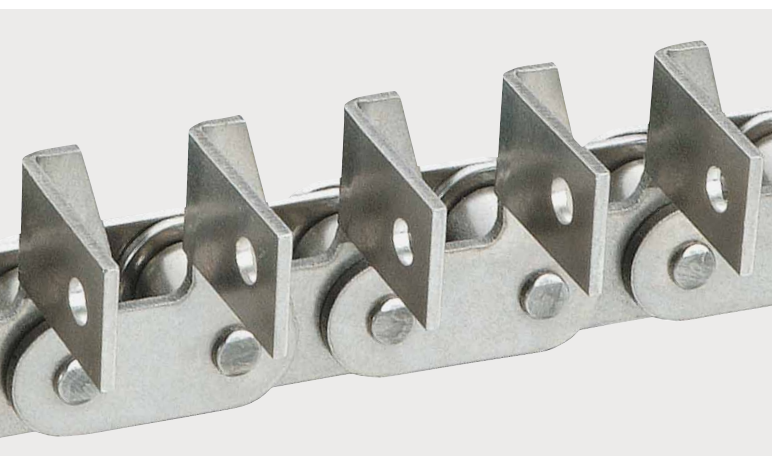
Roller chain with integrated functional component  
Application: Equipment technology



Roller chain with mounted special rollers, electrically conducting  
Application: Electrical industry



Top plate conveyor chains for connecting of machine tools and assembly systems  
Application: Automotive and electrical industry



Roller chain stainless steel with straight and bent inner and outer attachments on one side  
Application: Materials handling



Roller chain stainless steel with bent or straight attachments on one side with pins  
Application: Materials handling



Double strand roller chain with bent attachments on two sides and profiles riveted on

Application: Pallet conveyor



Marathon roller chain maintenance-free with offset and extended pins on one side

Application: Materials handling



Roller chain nickel-plated with bent attachments on one side at inner and outer link

Application: Materials handling



Roller chain with straight plates and welded on attachments and cotter pins on one side

Application: Materials handling



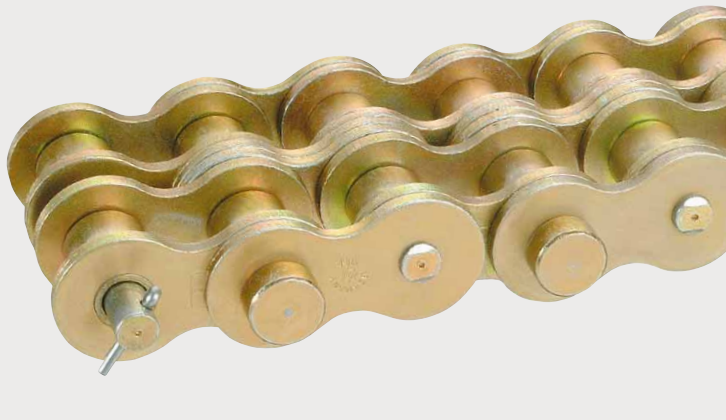
Roller chain with extended pins and functional components with rollers on one side

Application: Materials handling / Glass industry



Roller chain with extended pins on one side and special bent attachments

Application: Food industry



Duplex roller chain galvanized yellow chromated with alternating special attachment pins

Application: Hoisting systems



Roller chain with extended cotter pins on one side and special outer link

Application: Printing industry



Special chain with nickel-plated pins and plates, wide plastic rollers and special attachments

Application: Printing industry



Roller chain stainless steel with clamp plates

Application: Packaging industry



Duplex roller chain with bent attachments and revolving support rollers as well as grinded special attachments

Application: Packaging industry / Foil transport



Roller chain with extended cotter pins on one side to house functional components

Application: Agricultural technology



Roller chain with straight plates and plastic clips with elastomer support

Application: Careful conveying of sensitive goods



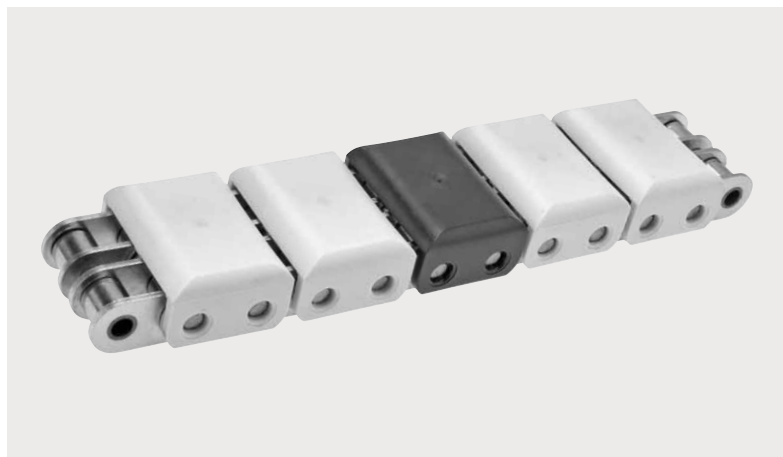
Roller chain push clamps which dip from top down under load (load level variably configurable)

Application: Natural stone machining



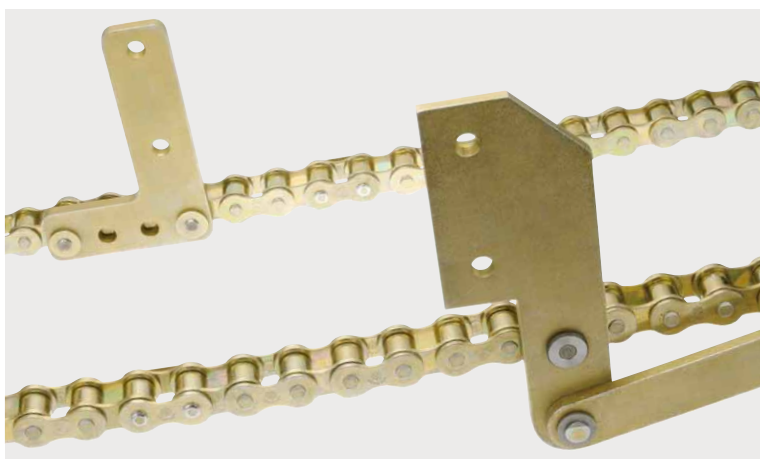
Triplex roller chains with push clamps, which dip from top down under load (adjustable load level)

Application: Storage system



Duplex Marathon roller chain with straight plates and plastic clips

Application: Careful conveying of sensitive goods



Roller chains with rocker arm and straight attachment

Application: Instant coffee packaging equipment



Roller chain with reinforced rocker arm attachment

Application: Furniture industry



**Roller chain with extended special pins**  
Application: Materials handling



**Roller chain with plastic sliding plates to gently transport load bearing systems**  
Application: Automotive industry



**Roller chain with special plates to house die tool carriers**  
Application: Machining



**Roller chain with special outer link**  
Application: Printing industry

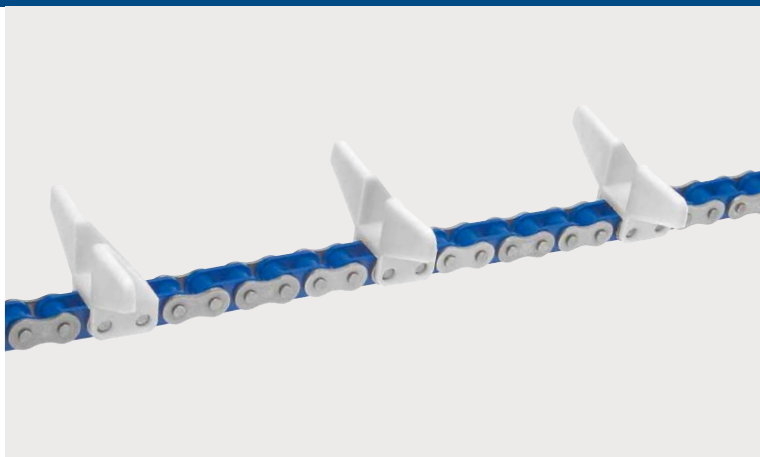


**Roller chain with special pins and ball casters for paternoster cabinets**  
Application: Chemical industry



**Roller chain with double pitch plates and hollow pins**  
Application: Electroplating

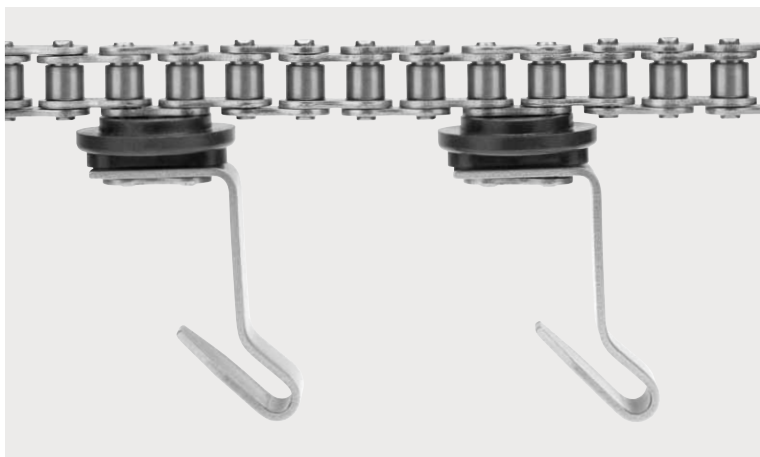




**Roller chain with plastic inner links and special clips**  
Application: Packaging industry



**Roller chain with bent attachments and fitted rollers for paternoster cabinets**  
Application: Electrical industry



**Roller chain with special attachments and sliding parts**  
Application: Clothing industry



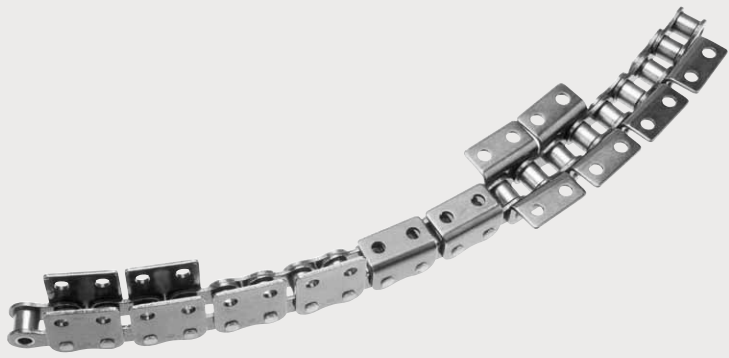
**Leaf chain zinc aluminium flake coated with wire rope and plate end link**  
Application: Domestic technique



**Roller chain with alternately mounted supporting brackets**  
Application: Furnace construction



**Roller chain with lateral support rollers and bent attachments**  
Application: Materials handling



Roller chain suitable for curved paths with different attachments



Sprocket with extended hub



Sprocket with milled in switching boxes



Special plate sprocket



Sprocket with inductively hardened toothing, special hub and tapped bore



Chain coupling for the elastic transfer of torques  
Application: Drive technology



ATC magazine chain 340 with nickel-plated pots to house tools

Application: Production technology



ATC magazine chain 320 with nickel-plated pots to house tools

Application: Production technology



Sprocket-chain system: a combination of simplex design and double pitch roller chains

Application: Hoisting chain for autoclaves



Special sprocket with inner toothed hub



Duplex sprocket to house flange with mounting bores



Duplex sprocket with tolerated bore



**Wippermann jr. GmbH**  
Delsterner Straße 133  
58091 Hagen  
Germany

**Phone** +49 2331 782-0  
**Fax** +49 2331 782-356

**E-mail** [info@wippermann.com](mailto:info@wippermann.com)  
**Internet** [www.wippermann.com](http://www.wippermann.com)